

**MIDDLE  
TENNESSEE**  
STATE UNIVERSITY

**Welcome to  
MTSU**

**Best in the U.S. Again**  
—The Princeton Review

**4**

**FOUR YEARS IN A ROW**

I AM *true*BLUE.

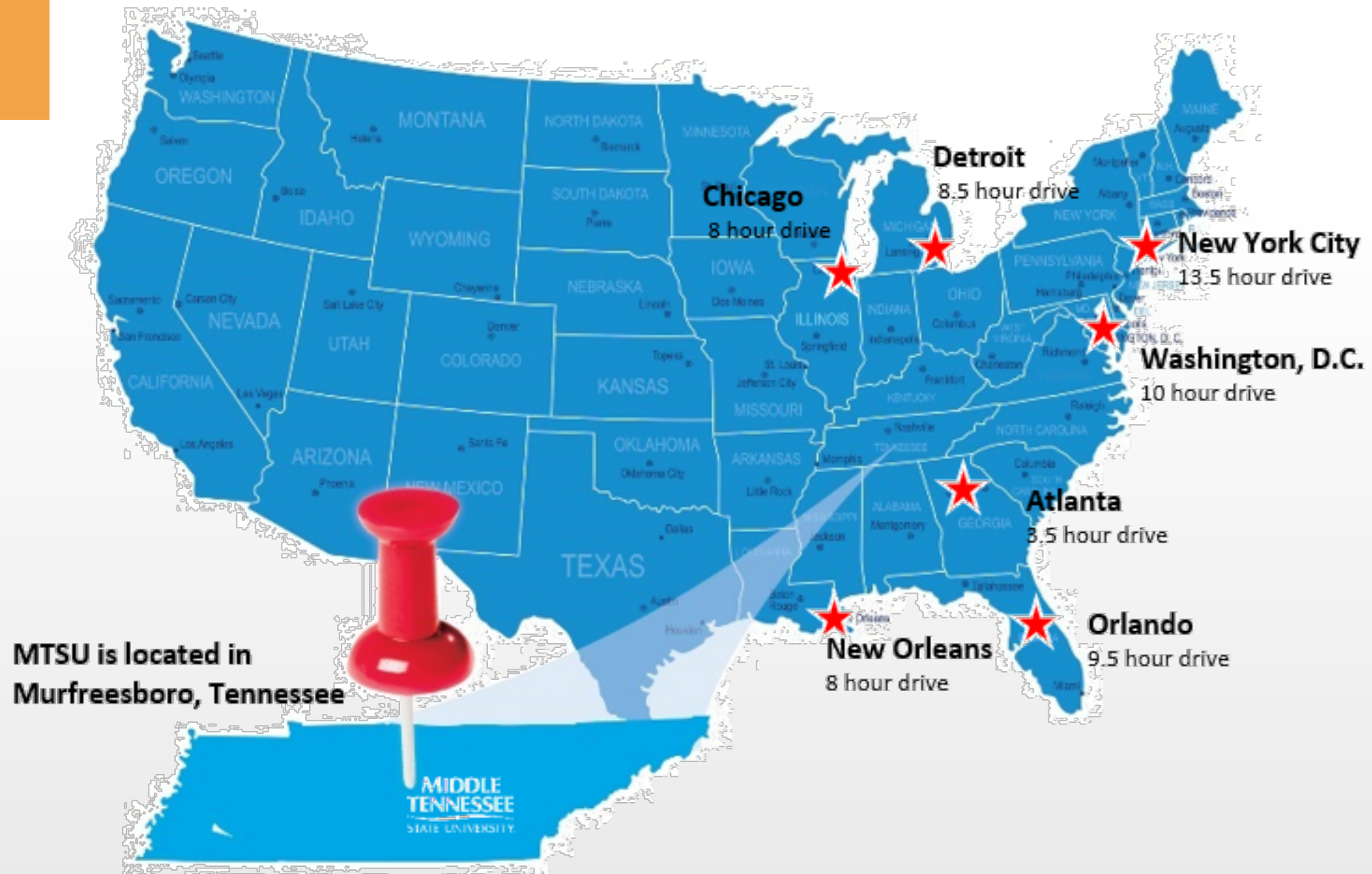
**MIDDLE  
TENNESSEE**  
STATE UNIVERSITY.

Used with permission. ©2012 TR Education IP Holdings, LLC. The Princeton Review is not affiliated with Princeton University.





# Location





# Beautiful Campus





# Beautiful Campus





# Housing



**Renovated Housing: computer labs, 24-hour front desk,  
laundry facilities, heat and air conditioning**

# Housing

- Housing is no longer accepting applications for Fall 2025-Spring 2026
- From now, you will submit a waitlist application
  1. Submit the online application
  2. \$350 Deposit. No needed at this time- no guarantee of housing
- Prepare your deposit
- Prepare the meningitis vaccination document.

# Housing

- You must monitor your MTSU email so you know when you will be assigned a room.
- When Housing emails you and tells have a room available, you must pay the fee as soon as possible, submit your Meningitis records
- If you are under the age of 18 years old, you are required to complete, a guarantor form, notarize it, and send in postal mail to the Housing office.

# Housing- What to know

1. The housing agreement is a contract- you sign the contract for two semesters.
2. You must continue in on-campus housing for the entire academic school year.
3. If you leave, you must continue to pay for the room
4. We suggest that you register for housing as soon as possible to get on the wait list
5. If your visa is denied, and you have paid the deposit, MTSU will refund the deposit to you
6. The Housing fee is added to the tuition fee on your Pipeline account.
7. Before you sign the housing agreement, please read the entire agreement first.



# Room Assignment

- MTSU has a Room Lottery Process to assign room
- If the student does not complete the Lottery form, they will have their room assigned with anyone.
- You must monitor your MTSU email to receive these notices.
- You are responsible to know the rules and timeline.

The link for the room assignment Lottery

<https://www.mtsu.edu/living-on-campus/wp-content/uploads/sites/58/2024/10/RoomLotteryProcess.pdf>

# Cost of Housing One Academic Year

## **Lyon Complex**

Mary, McHenry]

## **Monohan Complex**

[Reynolds, Schardt]

Single/Private

\$3,795

Smith, Sims, Beasley, Judd,  
Gracy, Cummings  
Corlew, Deere, Nicks,  
Row Housing

Shared

\$3,246



# Cost of Housing One Academic Year

Scarlett Commons  
Apartments

Private Bedroom

\$3,814

Womack Lane Apartments  
for Single Students

PVT Bedroom [shared 2-  
bedroom apt]

\$3,361

One-Bedroom, PVT apt

\$3,799

Womack Lane Apartments  
for Students with Families

One-bedroom furnished

\$3,799

Two-bedroom unfurnished

\$4,238

# Dormitories



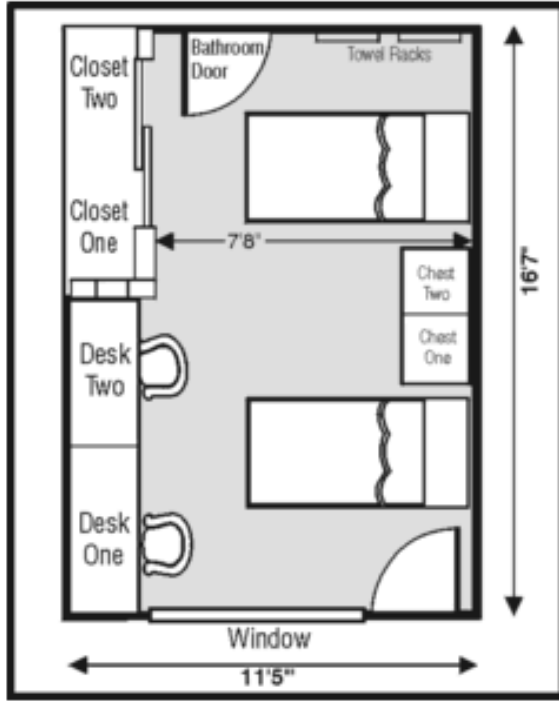
**MIDDLE  
TENNESSEE**  
STATE UNIVERSITY

## Campus Context Map

1. Deere & Nicks Hall
2. Cummings & Gorkew
3. Student Union
4. Scarlett Commons
5. MTSU Campus Rec
6. The Row: Houses 1-8



# Gracy Hall

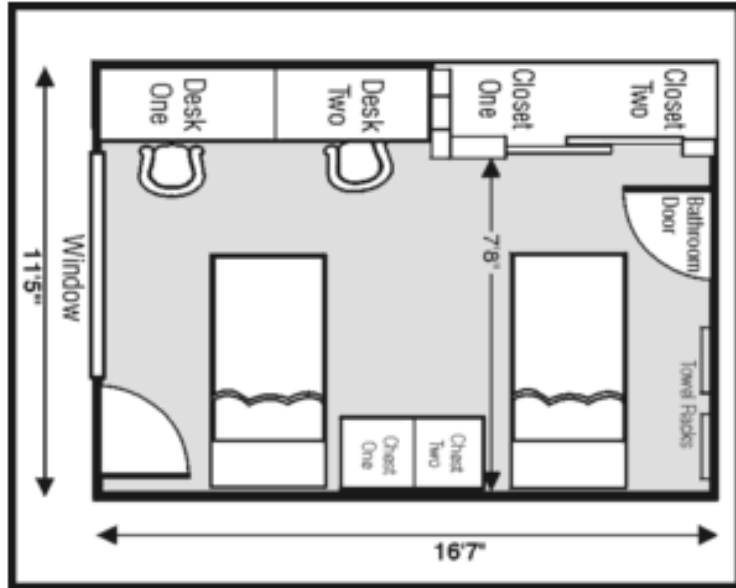


**MIDDLE**  
**TENNESSEE**  
STATE UNIVERSITY.

I AM *true*  
**BLUE**



# Judd Hall



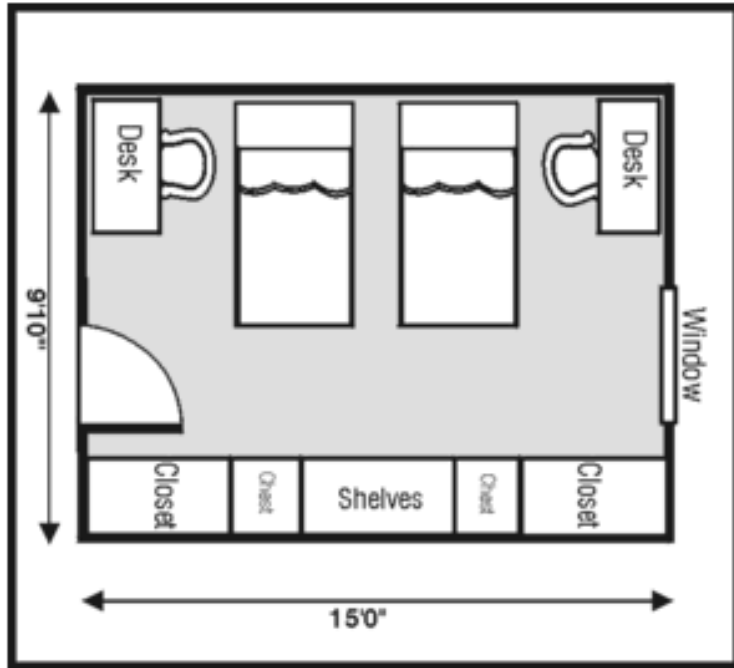
**MIDDLE**  
**TENNESSEE**  
STATE UNIVERSITY.

I AM *true*  
**BLUE**





# Smith Hall

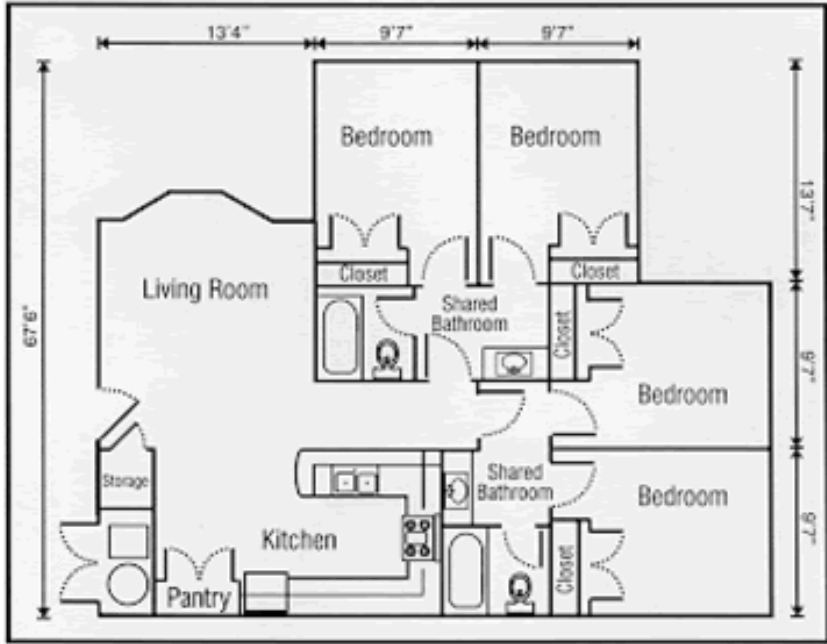


**MIDDLE  
TENNESSEE**  
STATE UNIVERSITY.

I AM *true*  
**BLUE**



# Scarlett Commons



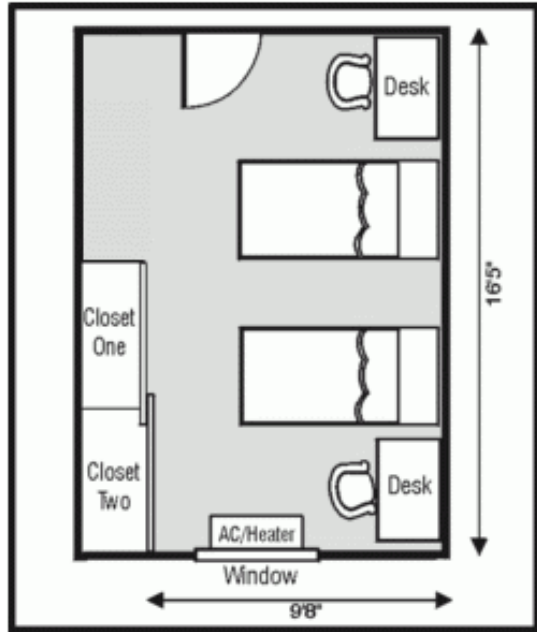
**MIDDLE  
TENNESSEE**  
STATE UNIVERSITY.

I AM *true*  
**BLUE**

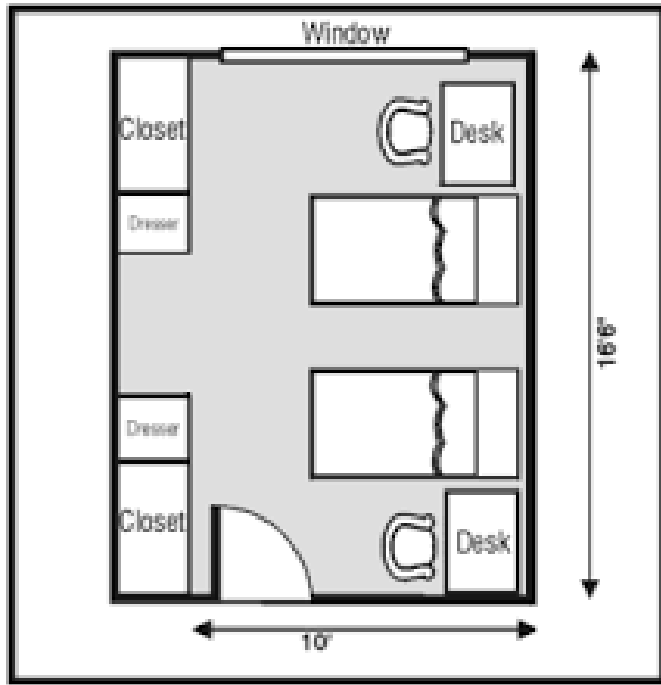




# Corlew Hall



# Monohan Hall



**MIDDLE  
TENNESSEE**  
STATE UNIVERSITY.

I AM *true*  
**BLUE**





# Meal Plans

- Students living on campus must buy a meal plan.
- Meal Plans can be used all around campus
- Meal plans come in two different sizes for freshmen.
- Meal Plan Video:

[https://www.youtube.com/watch?v=ahLnIQ\\_LvNw](https://www.youtube.com/watch?v=ahLnIQ_LvNw)



## Meal Plans for Freshmen

### Unlimited 7 Day with \$450 Flex Bucks

\$2,912.00

- All Access, 7 Days a Week
- \$450 FlexBucks

### Unlimited 7 Day Meal Plan

\$2,762.00

- All Access, 7 Days a Week
- \$275 FlexBucks





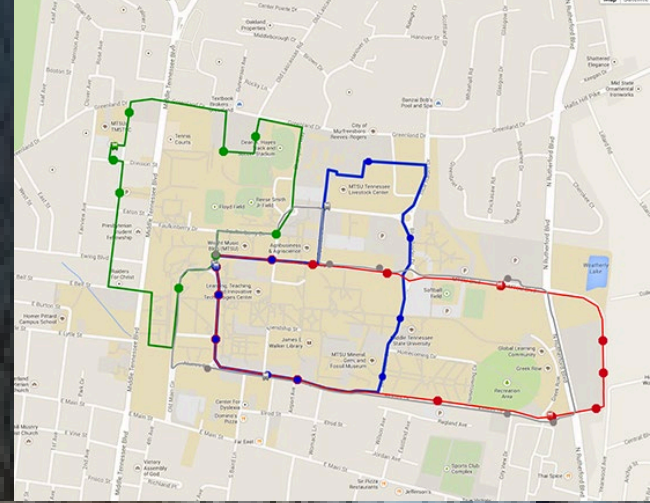
## Places to eat On campus



# MTSU Shuttle

Safe & Convenient

Three bus lines that can take you  
to any school buildings. They  
run every five to ten minutes.  
Mon-Thu: 7am-10pm  
Fri: 7am-6pm

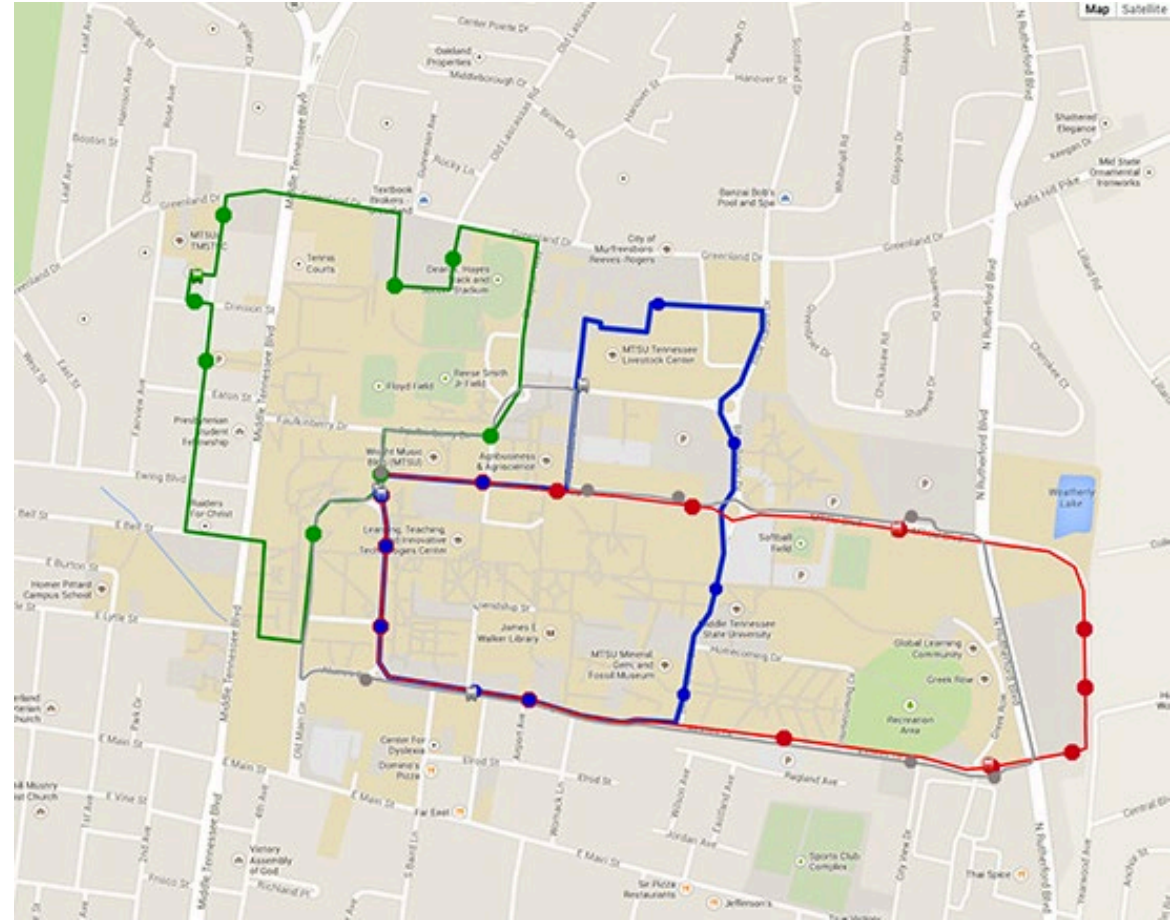






**MIDDLE  
TENNESSEE**  
STATE UNIVERSITY.

I AM *true*  
**BLUE**



# ANNOUNCEMENTS



**MIDDLE  
TENNESSEE**  
STATE UNIVERSITY.

I AM *true*  
**BLUE**





# To Do List

- 
- ☐ Attend the Webinars
  - ☐ Set Up student accounts
  - ☐ Arrange housing
  - ☐ Send immunizations
  - ☐ Send a copy of visa

# Upcoming Events

May

American Culture  
May 20

Visa Interview  
May 29

June

Next Steps  
June 3

Student Accounts  
June 12

Pre-Arrival Checklist  
June 17

# Airport Pickup Dates

August  
16, 2025

Airport  
Pick up #1

2:00 pm

August  
24,  
2025

Airport  
Pick up #2

2:00 pm





# Q & A



**THANK  
YOU!**



**Blue Horseshoe**  
A symbol of good luck and good fortune, the Blue Horseshoe is a tradition of Middle Tennessee State University.  
The Blue Horseshoe is a symbol of good luck and good fortune, and is a tradition of Middle Tennessee State University.  
The Blue Horseshoe is a symbol of good luck and good fortune, and is a tradition of Middle Tennessee State University.  
The Blue Horseshoe is a symbol of good luck and good fortune, and is a tradition of Middle Tennessee State University.